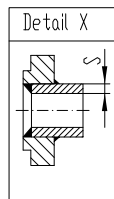


© by KSR



Grundwerkstoff base material	1.4401/1.4404 316/316L
Schweißzusatz filler material	DIN EN ISO 14343-A W 19 12 3 L Si/ A5.9ER 316L Si
Schweißverfahren welding process	141, 142 (WIG / TIG)

22	1	Magnetostriktive Level Transmitter for Magnetic Level Gauge Type BLM-TBI	Stainless Steel						
21	1	Scale in %	Stainless Steel						
20	1	Welding Coupling (OD 14x3mm)	SS316/316L (EN 1.4401/1.4404)						
19	1	Reducer (OD 21.3x2.77mm / OD 14x3mm)	SS316/316L (EN 1.4401/1.4404)						
18	1	1/2" Elbow 90° (OD 21.3x2.77mm)	SS316/316L (EN 1.4401/1.4404)						
17	1	Pipe (OD 21.3x2.77mm)	SS316/316L (EN 1.4401/1.4404)						
16	1	Flange 2" 300# Form RF As Per ASME B16.5	SS316/316L (EN 1.4401/1.4404)						
15	1	Flange 2" 300# WNRF As Per ASME B16.5 (AD 60.3x2.77mm)	SS316/316L (EN 1.4401/1.4404)						
14	1	Spiral wound type Gasket	SS 316L/Graphite						
13	16	Nut (UNC-Series)	Stainless Steel A194 Gr. 8						
12	8	Stud (UNC-Series)	Stainless Steel A193 Gr. B8 CL2						
11	1	Name Plate	Stainless Steel						
10	1	Floater (ZTSS355/PN25/R48H)	Titanium						
9	1	Level Indicator With Floater Failure Display (BMD-FR)	Stainless Steel Housing & Stainless Steel Flaps						
8	1	Chamber 2" (OD 60.3x2.77mm)	SS316/316L (EN 1.4401/1.4404)						
7	2	Dampening Element	1.4310/PTFE						
6	1	Pipe Cap (OD 60.3x2.77mm)	SS316/316L (EN 1.4401/1.4404)						
5	1	Welding Coupling (OD 14x3mm)	SS316/316L (EN 1.4401/1.4404)						
4	2	Needle valve female 3/4"NPT	SS316/316L (EN 1.4401/1.4404)						
3	2	3/4"NPT Plug	SS316/316L (EN 1.4401/1.4404)						
2	2	Pipe 1" (OD 33.4x2.77mm)	SS316/316L (EN 1.4401/1.4404)						
1	2	Process Flange 2" 300# Form RF As Per ASME B16.5	SS316/316L (EN 1.4401/1.4404)						
Item No.	Quantity	Description	Material						
TAG-Nr. / TAG-No.:		/							
22 bar		-45°C... 120 °C	33 bar	/	ASME B31.3	Einstufung nach / classification acc. DGR / PED 2014/68/EU	/	/	/
PS max. zul. Druck max. all. pressure		TS min. / max. zul. Temperatur min. / max. zul. Temperatur	PT Prüfdruck test pressure	V Volumen volume	ASME B31.3 Auslegung design code		Kategorie / category	Fluidgruppe / fluidgroup	Modul / module
							gem. Art.13 d. RL / acc. to art.13 of directive 2014/68/EU		
zulässige Betriebsdaten / allowable operating parameters									
BNA-Z"/300/RF-MG-M1220-L60x2.77-MRFV/SVP-ZTSS355/PN25/R48H-Ex							drawing number		
KSR-BYPASS LEVEL GAUGE							QUO-Q110071983.01		
KSR-BYPASS NIVEAUSTANDANZEIGER									
material				scale	modified	03.10.2024	SUPER	reference	Q110071983
SS316/316L (EN 1.4401/1.4404)				1:5	released			UV/DR 57	sheets 1 / 1
raw part				nominal size	checked	03.10.2024	PATILS	comments	
Längsmalfertigkeiten Tol. DIN EN ISO 13920-BE				Check indicator	SIZE ISO 14405 GG		units	 A Division of the WIKA Group	
B 30-400 400-1000 1000-2000 2000-4000 4000-6000 6000-12000 < 400 4000-10000 > 10000					ISO 8015				
Gradgenauheit- Ebenheits- und Parallelitätstoleranzen					language GER/ENG				
E 1 1.5 2 3 4 5 - - -									
5				6		7			
DEZ621_EN_A3M_T15 24.02.2020									